

UNIVERSITY OF CAMBRIDGE INTERNATIONAL EXAMINATIONS
International General Certificate of Secondary Education

MARK SCHEME for the October/November 2008 question paper

0418 INFORMATION TECHNOLOGY

0418/03

Paper 3 (Practical Test B), maximum raw mark 100

This mark scheme is published as an aid to teachers and candidates, to indicate the requirements of the examination. It shows the basis on which Examiners were instructed to award marks. It does not indicate the details of the discussions that took place at an Examiners' meeting before marking began.

All Examiners are instructed that alternative correct answers and unexpected approaches in candidates' scripts must be given marks that fairly reflect the relevant knowledge and skills demonstrated.

Mark schemes must be read in conjunction with the question papers and the report on the examination.

- CIE will not enter into discussions or correspondence in connection with these mark schemes.

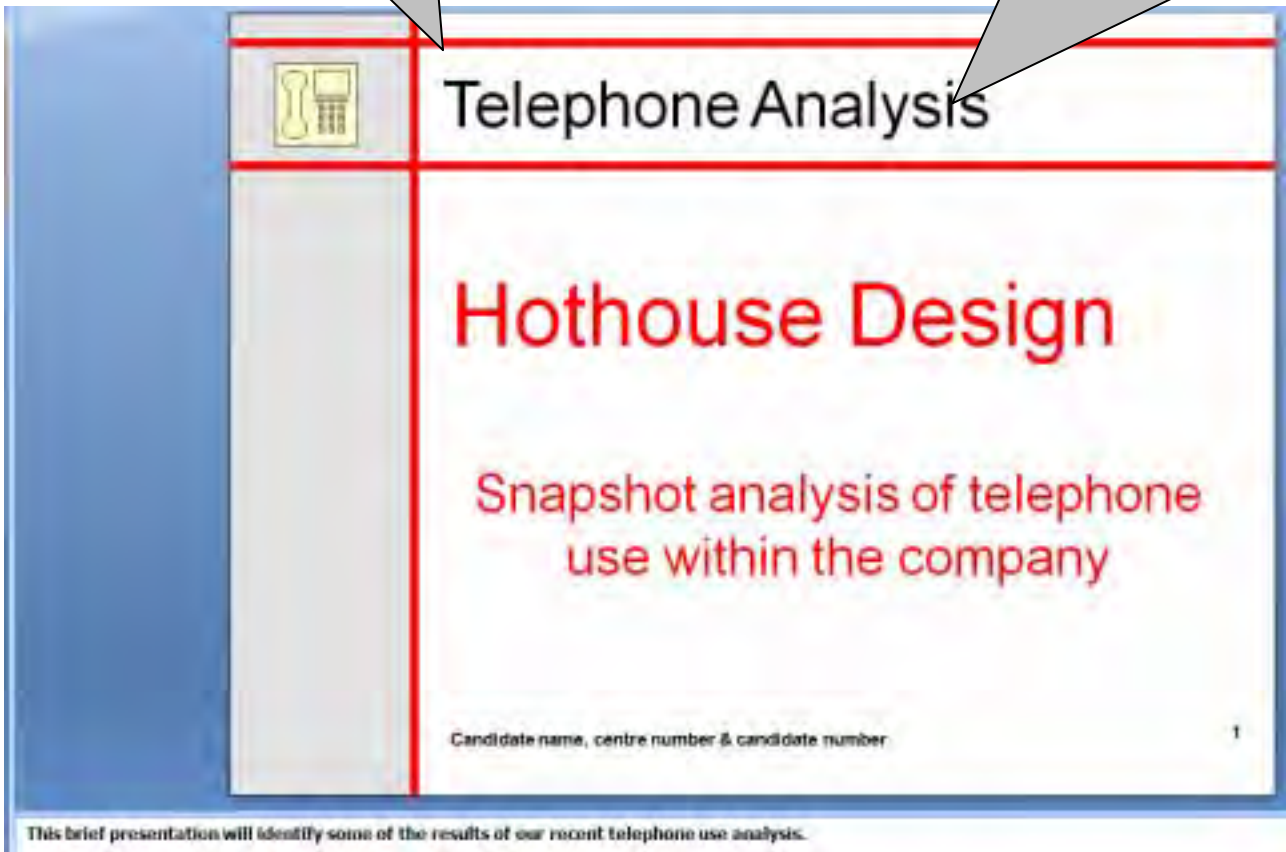
CIE is publishing the mark schemes for the October/November 2008 question papers for most IGCSE, GCE Advanced Level and Advanced Subsidiary Level syllabuses and some Ordinary Level syllabuses.



Page 2	Mark Scheme	Syllabus	Paper
	IGCSE – October/November 2008	0418	03

Master slide – CHECK CONSISTENCY		
Background	Pale grey	1 mark
	Between ¼ and ⅛	1 mark
Red stripe	Vertical (edge of grey)	1 mark
	Two horizontal	1 mark
	6 point lines	1 mark
Logo	Telephone	1 mark
	Correct place	1 mark
Slide numbering	Bottom right & automated, on all slides	1 mark
Name, cand no, Centre no	Bottom left black, 12 pt, sans-serif	1 mark
Telephone Analysis text	Black 44 pt, sans-serif, left aligned	1 mark
	Position & 100% correct	1 mark
Master slide items	Not overlapping any object	1 mark

Heading	Red, left aligned, 60 pt	1 mark
	100% correct	1 mark
Subheading	Red, centre aligned, 36 pt	1 mark
	100% correct	1 mark



Presenter notes	100% correct	1 mark
	Right place	1 mark

Page 3	Mark Scheme	Syllabus	Paper
	IGCSE – October/November 2008	0418	03

Subheading	Red, centre aligned, 36 pt 100% correct	1 mark 1 mark
Left bullets	Black, left aligned, 24 pt, consistent 100% correct	1 mark 1 mark
Right bullets	Black, left aligned, 24 pt, consistent 100% correct	1 mark 1 mark

Telephone Analysis

Departments analysed

- Accounts
- Cleaning
- Human Resources
- Information Systems
- Maintenance
- Transport
- Production
- Purchasing
- Sales
- Security
- Site Management

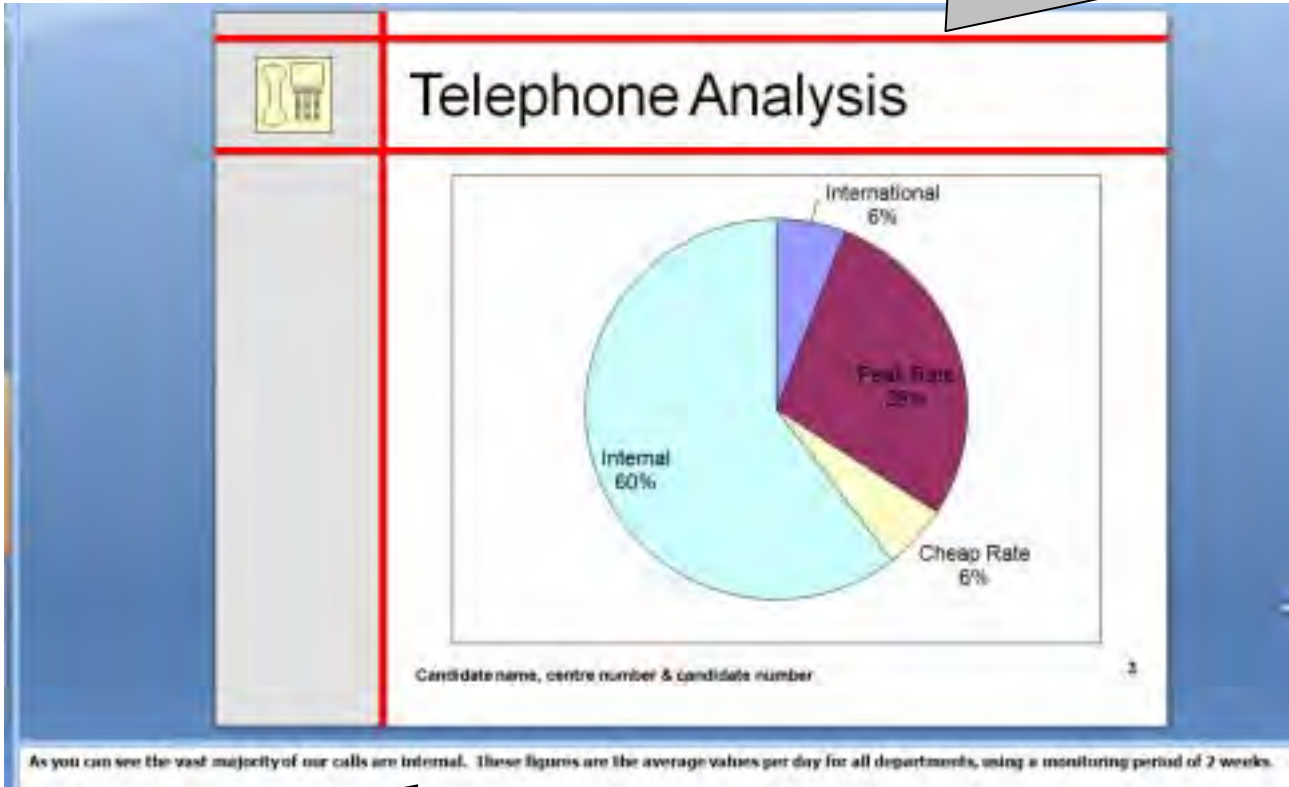
Candidate name, centre number & candidate number

Telephones were used by other departments but some have been removed from the sample.

Presenter notes	100% correct	1 mark
-----------------	--------------	--------

Page 4	Mark Scheme	Syllabus	Paper
	IGCSE – October/November 2008	0418	03

Chart	Correct chart type & 4 segments	1 mark
	Call type labels correct	1 mark
	% value labels correct	1 mark
	Centre of slide space & enlarged with no distortion	1 mark
	No legend	1 mark



Presenter notes	100% correct	1 mark
-----------------	--------------	--------

Page 5	Mark Scheme	Syllabus	Paper
	IGCSE – October/November 2008	0418	03

Subheading	Red, centre aligned, 36 pt, no bullet 100% correct	1 mark
Bullets	Black, left aligned, 24 pt, consistent 100% correct & in correct place	1 mark
Image	Telephone	1 mark

Telephone Analysis

Replace some calls with:

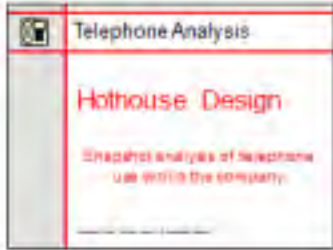
- Video conference
- E-mail
- SMS messages

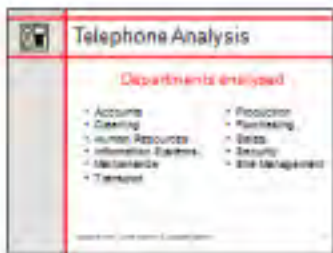
Candidate name, centre number & candidate number

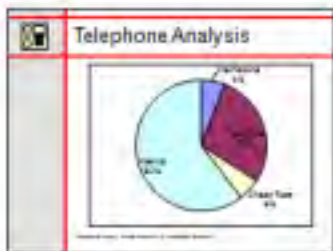
We must look at cheaper media in order to reduce our operating costs.

Presenter notes	100% correct	1 mark
-----------------	--------------	--------

Audience notes Printed with space to annotate 1 mark
 3 slides / page 1 mark

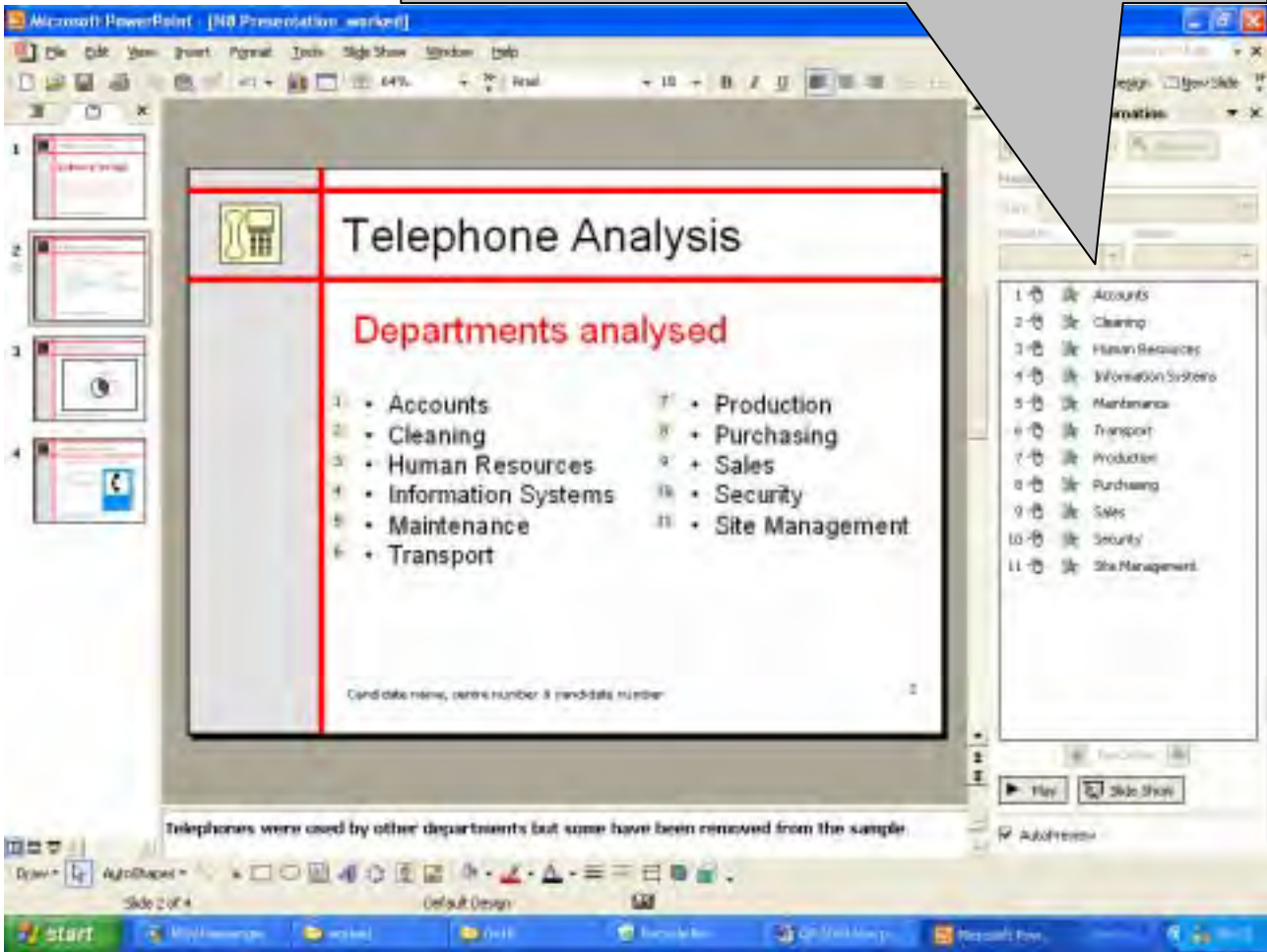




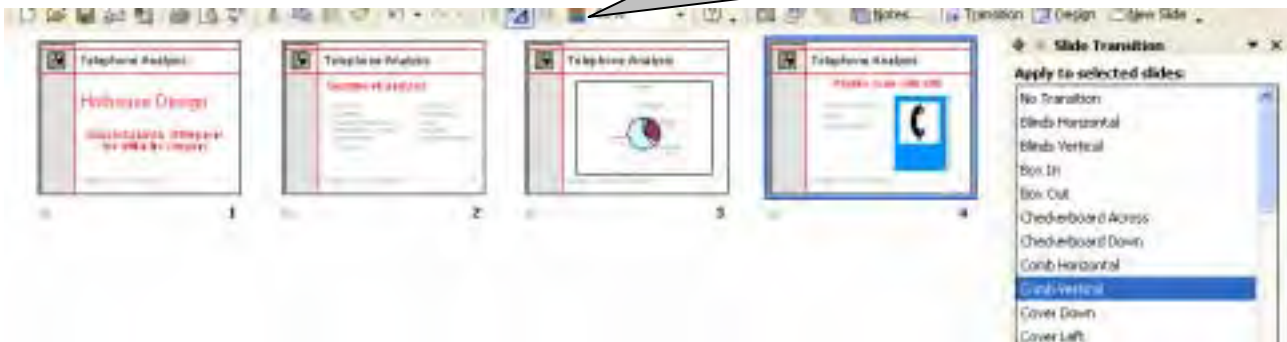




Animation Bullets only (1–6 and 7–11) 1 mark



Transition Between all slides 1 mark



Page 8	Mark Scheme	Syllabus	Paper
	IGCSE – October/November 2008	0418	03

STYLESHEET

h1 { color: #FF0000; font-family: "Times New Roman", serif; font-size: 20px; text-align: Center; font-style: italic; font-weight: bold }

h2 { color: #FF0000; font-family: "Times New Roman", serif; font-size: 18px; text-align: Center }

h3 { color: #000000; font-family: "Times New Roman", serif; font-size: 16px; text-align: left }

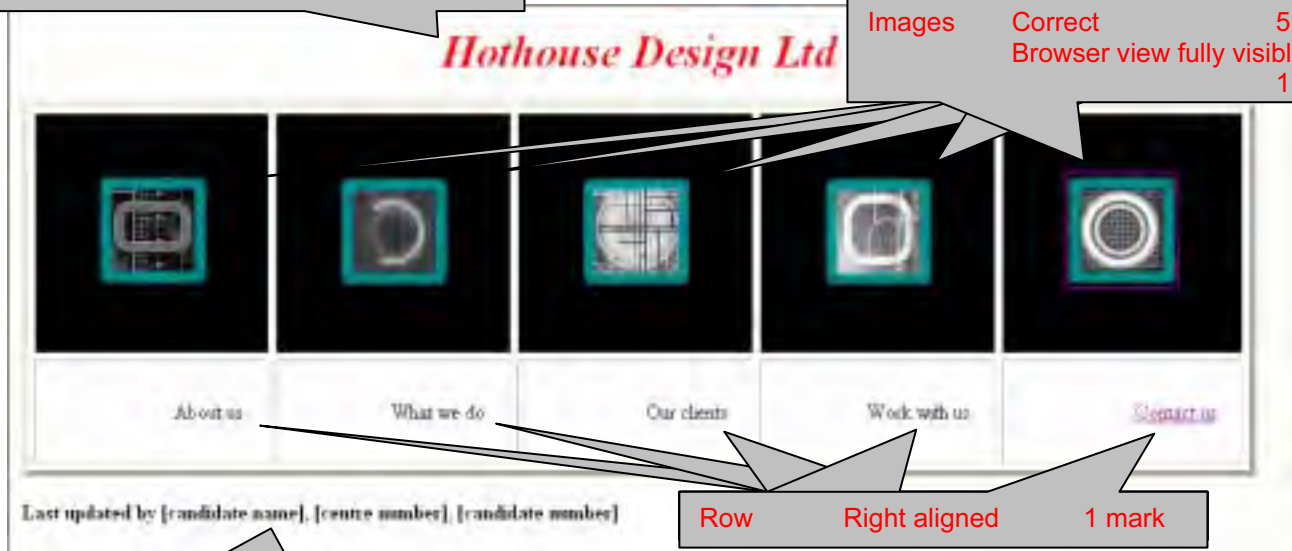
li { color: #000000; font-family: Arial, sans-serif; font-size: 14px; text-align: left }

p { color: #000066; font-family: Arial, sans-serif; font-size: 14px; text-align: left }

h1 & h2	Red	1 mark
p	Dark blue	1 mark
h1, h2, h3	TNR primary then serif	1 mark
li, p	Arial primary then sans-serif	1 mark
h1 & h2	Centre aligned	1 mark
h1	Bold	1 mark
h1	Italic	1 mark

Text 100% correct 1 mark
 Style h1 From stylesheet 1 mark

Images Correct 5 marks
 Browser view fully visible 1 mark



Row Right aligned 1 mark

Bottom left Last updated by & name & no's 1 mark
 Style h3 1 mark

Page 9	Mark Scheme	Syllabus	Paper
	IGCSE – October/November 2008	0418	03

```

<html>
<head>
<title>Hothouse Design</title>
<link rel="stylesheet" type="text/css" href="n8style1.css">
</head>

<body>

<h1>Hothouse Design Ltd</h1>

<table border="5" cellpadding="20" cellspacing="5" width="100%" height="300px">
<tr bgcolor="#000000" align="center">
<td> 
</td>
<td> 
</td>
<td> 
</td>
<td> 
</td>
<td> <a href="N8conta1.htm" target="_contact"></a>
</td>
</tr>
<tr align="right">
<td> About us
</td>
<td> What we do
</td>
<td> Our clients
</td>
<td> Work with us
</td>
<td> <a href="N8conta1.htm" target="_contact"> Contact us</a>
</td>
</tr>
</table>

<h3>Last updated by [candidate name], [centre number], [candidate number]</h3>

</body>
</html>

```

Correct external stylesheet attached 1 mark

Table	Cell padding 20	1 mark
	Cell spacing 5	1 mark
	Width 100%	1 mark
	Height 300	1 mark
	Border 5	1 mark

Row	Centre aligned	2 marks
	Background colour black	1 mark

Hyperlink	Correct	1 mark
Window	Correct	1 mark

Row	Right aligned	1 mark
-----	---------------	--------

Hyperlink	Correct	1 mark
Window	Correct	1 mark

Page 10	Mark Scheme	Syllabus	Paper
	IGCSE – October/November 2008	0418	03



Bottom left Last updated by & name & no's 1 mark
 Style h3 1 mark

Correct external stylesheet attached 1 mark

```
<html>
<head>
<title>Contact us</title>
<link rel="stylesheet" type="text/css" href="n8style1.css">
</head>

<body>
<h1>The Hothouse Design Group has offices in the following locations:</h1>
<h3>Hothouse Design Head Office</h3>
<p>Hothouse Design (UK) Ltd
<br>1 Hills Road, Cambridge, CB1 2EU, England</p>
<h3>Hothouse Design International Offices</h3>
<p>Hothouse Design
<br>Buenos Aires, Argentina</p>
<p>Hothouse Design
<br>Helsinki, Finland</p>
<p>Hothouse Hellenic Ltd
<br>Athens, Greece</p>
<p>Hothouse Design (Asia Pacific)
<br>Singapore</p>
<p>Hothouse Design Inc.
<br>New York, USA
<p>Hothouse Design Australia
<br>Melbourne, Australia</p>
<h3>Last updated by [candidate name], [centre number], [candidate number]</h3>
</body>
</html>
```

Page 11	Mark Scheme	Syllabus	Paper
	IGCSE – October/November 2008	0418	03

Candidate name Centre number Candidate number

Name	SCode	Total minutes
=VLOOKUP(B2,N8code.csv!\$A\$2:\$B\$13,2)	GBA	=SUMIF(\$B\$11:\$B\$84,B2,\$D\$11:\$D\$84)
=VLOOKUP(B3,N8code.csv!\$A\$2:\$B\$13,2)	GBR	=SUMIF(\$B\$11:\$B\$84,B3,\$D\$11:\$D\$84)
=VLOOKUP(B4,N8code.csv!\$A\$2:\$B\$13,2)	LEX	=SUMIF(\$B\$11:\$B\$84,B4,\$D\$11:\$D\$84)
=VLOOKUP(B5,N8code.csv!\$A\$2:\$B\$13,2)	MAR	=SUMIF(\$B\$11:\$B\$84,B5,\$D\$11:\$D\$84)
=VLOOKUP(B6,N8code.csv!\$A\$2:\$B\$13,2)	RSP	=SUMIF(\$B\$11:\$B\$84,B6,\$D\$11:\$D\$84)
=VLOOKUP(B7,N8code.csv!\$A\$2:\$B\$13,2)	SMO	=SUMIF(\$B\$11:\$B\$84,B7,\$D\$11:\$D\$84)
=VLOOKUP(B8,N8code.csv!\$A\$2:\$B\$13,2)	VCR	=SUMIF(\$B\$11:\$B\$84,B8,\$D\$11:\$D\$84)

Header **Name, candidate no, Centre no** **1 mark**

SUMIF **Correct formulae** **1 mark**
Correct compare range **1 mark**
Correct reference **1 mark**
Correct calculate range **1 mark**

Date	SCode	Duration	Minutes	Seconds	Length
39450	MAR	321	=INT(C11/60)	=C11-(D11*60)	=IF(D11<6,"Short",IF(D11<12,"Medium","Long"))
39450	GBR	324	=INT(C12/60)	=C12-(D12*60)	=IF(D12<6,"Short",IF(D12<12,"Medium","Long"))
39450	VCR	324	=INT(C13/60)	=C13-(D13*60)	=IF(D13<6,"Short",IF(D13<12,"Medium","Long"))
39450	VCR	324	=INT(C14/60)	=C14-(D14*60)	=IF(D14<6,"Short",IF(D14<12,"Medium","Long"))
39450	VCR	324	=INT(C15/60)	=C15-(D15*60)	=IF(D15<6,"Short",IF(D15<12,"Medium","Long"))
39450	VCR	324	=INT(C16/60)	=C16-(D16*60)	=IF(D16<6,"Short",IF(D16<12,"Medium","Long"))
39450	VCR	430	=INT(C17/60)	=C17-(D17*60)	=IF(D17<6,"Short",IF(D17<12,"Medium","Long"))
39450	SMO	359	=INT(C18/60)	=C18-(D18*60)	=IF(D18<6,"Short",IF(D18<12,"Medium","Long"))
39450	MAR	376	=INT(C19/60)	=C19-(D19*60)	=IF(D19<6,"Short",IF(D19<12,"Medium","Long"))
39450	MAR	168	=INT(C20/60)	=C20-(D20*60)	=IF(D20<6,"Short",IF(D20<12,"Medium","Long"))
39450	GBA	878	=INT(C21/60)	=C21-(D21*60)	=IF(D21<6,"Short",IF(D21<12,"Medium","Long"))
39450	GBR	289	=INT(C22/60)	=C22-(D22*60)	=IF(D22<6,"Short",IF(D22<12,"Medium","Long"))
39450	LEX	302	=INT(C23/60)	=C23-(D23*60)	=IF(D23<6,"Short",IF(D23<12,"Medium","Long"))
39450	GBA	438	=INT(C24/60)	=C24-(D24*60)	=IF(D24<6,"Short",IF(D24<12,"Medium","Long"))
39450	RSP	352	=INT(C25/60)	=C25-(D25*60)	=IF(D25<6,"Short",IF(D25<12,"Medium","Long"))
39450	GBA	798	=INT(C26/60)	=C26-(D26*60)	=IF(D26<6,"Short",IF(D26<12,"Medium","Long"))
39450	LEX	769	=INT(C27/60)	=C27-(D27*60)	=IF(D27<6,"Short",IF(D27<12,"Medium","Long"))
39450	GBA	937	=INT(C28/60)	=C28-(D28*60)	=IF(D28<6,"Short",IF(D28<12,"Medium","Long"))
39450	LEX	313	=INT(C29/60)	=C29-(D29*60)	=IF(D29<6,"Short",IF(D29<12,"Medium","Long"))
39450	MAR	390	=INT(C30/60)	=C30-(D30*60)	=IF(D30<6,"Short",IF(D30<12,"Medium","Long"))
39450	GBA	326	=INT(C31/60)	=C31-(D31*60)	=IF(D31<6,"Short",IF(D31<12,"Medium","Long"))
39450	GBR	880	=INT(C32/60)	=C32-(D32*60)	=IF(D32<6,"Short",IF(D32<12,"Medium","Long"))
39450	LEX	820	=INT(C33/60)	=C33-(D33*60)	=IF(D33<6,"Short",IF(D33<12,"Medium","Long"))
39450	VCR	333	=INT(C34/60)	=C34-(D34*60)	=IF(D34<6,"Short",IF(D34<12,"Medium","Long"))
39450	MAR	352	=INT(C35/60)	=C35-(D35*60)	=IF(D35<6,"Short",IF(D35<12,"Medium","Long"))
39450	LEX	806	=INT(C36/60)	=C36-(D36*60)	=IF(D36<6,"Short",IF(D36<12,"Medium","Long"))

Name **Lookup used** **1 mark**
External file/sheet for code **1 mark**
Correct range & return column **1 mark**

Page 12	Mark Scheme		Syllabus	Paper
	IGCSE – October/November 2008		0418	03

	Candidate name	Centre number	Candidate number	
39451	MAR	388	=INT(C37/60)	=C37-(D37*60) =IF(D37<6,"Short",IF(D37<12,"Medium","Long"))
39451	SMO	488	=INT(C38/60)	=C38-(D38*60) =IF(D38<6,"Short",IF(D38<12,"Medium","Long"))
39451	GBA	302	=INT(C39/60)	=C39-(D39*60) =IF(D39<6,"Short",IF(D39<12,"Medium","Long"))
39451	LEX	351	=INT(C40/60)	=C40-(D40*60) =IF(D40<6,"Short",IF(D40<12,"Medium","Long"))
39451	LEX	527	=INT(C41/60)	=C41-(D41*60) =IF(D41<6,"Short",IF(D41<12,"Medium","Long"))
39451	MAR	249	=INT(C42/60)	=C42-(D42*60) =IF(D42<6,"Short",IF(D42<12,"Medium","Long"))
39451	SMO	942	=INT(C43/60)	=C43-(D43*60) =IF(D43<6,"Short",IF(D43<12,"Medium","Long"))
39451	MAR	776	=INT(C44/60)	=C44-(D44*60) =IF(D44<6,"Short",IF(D44<12,"Medium","Long"))
39451	MAR	324	=INT(C45/60)	=C45-(D45*60) =IF(D45<6,"Short",IF(D45<12,"Medium","Long"))
39451	SMO	354	=INT(C46/60)	=C46-(D46*60) =IF(D46<6,"Short",IF(D46<12,"Medium","Long"))
39451	LEX	824	=INT(C47/60)	=C47-(D47*60) =IF(D47<6,"Short",IF(D47<12,"Medium","Long"))
39451	LEX	426	=INT(C48/60)	=C48-(D48*60) =IF(D48<6,"Short",IF(D48<12,"Medium","Long"))
39451	LEX	739	=INT(C49/60)	=C49-(D49*60) =IF(D49<6,"Short",IF(D49<12,"Medium","Long"))
39451	GBA	300	=INT(C50/60)	=C50-(D50*60) =IF(D50<6,"Short",IF(D50<12,"Medium","Long"))
39451	GBR	263	=INT(C51/60)	=C51-(D51*60) =IF(D51<6,"Short",IF(D51<12,"Medium","Long"))
39451	MAR	168	=INT(C52/60)	=C52-(D52*60) =IF(D52<6,"Short",IF(D52<12,"Medium","Long"))
39451	VCR	807	=INT(C53/60)	=C53-(D53*60) =IF(D53<6,"Short",IF(D53<12,"Medium","Long"))
39451	MAR	821	=INT(C54/60)	=C54-(D54*60) =IF(D54<6,"Short",IF(D54<12,"Medium","Long"))
39451	MAR	796	=INT(C55/60)	=C55-(D55*60) =IF(D55<6,"Short",IF(D55<12,"Medium","Long"))
39451	VCR	361	=INT(C56/60)	=C56-(D56*60) =IF(D56<6,"Short",IF(D56<12,"Medium","Long"))
39451	GBR	351	=INT(C57/60)	=C57-(D57*60) =IF(D57<6,"Short",IF(D57<12,"Medium","Long"))
39451	SMO	282	=INT(C58/60)	=C58-(D58*60) =IF(D58<6,"Short",IF(D58<12,"Medium","Long"))
39451	RSP	342	=INT(C59/60)	=C59-(D59*60) =IF(D59<6,"Short",IF(D59<12,"Medium","Long"))
39451	GBR	711	=INT(C60/60)	=C60-(D60*60) =IF(D60<6,"Short",IF(D60<12,"Medium","Long"))
39451	SMO	398	=INT(C61/60)	=C61-(D61*60) =IF(D61<6,"Short",IF(D61<12,"Medium","Long"))
39451	GBA	276	=INT(C62/60)	=C62-(D62*60) =IF(D62<6,"Short",IF(D62<12,"Medium","Long"))
39451	MAR	297	=INT(C63/60)	=C63-(D63*60) =IF(D63<6,"Short",IF(D63<12,"Medium","Long"))
39451	MAR	359	=INT(C64/60)	=C64-(D64*60) =IF(D64<6,"Short",IF(D64<12,"Medium","Long"))
39451	GBA	558	=INT(C65/60)	=C65-(D65*60) =IF(D65<6,"Short",IF(D65<12,"Medium","Long"))
39451	GBA	304	=INT(C66/60)	=C66-(D66*60) =IF(D66<6,"Short",IF(D66<12,"Medium","Long"))
39451	SMO	264	=INT(C67/60)	=C67-(D67*60) =IF(D67<6,"Short",IF(D67<12,"Medium","Long"))
39452	GBR	936	=INT(C68/60)	=C68-(D68*60) =IF(D68<6,"Short",IF(D68<12,"Medium","Long"))
39452	LEX	512	=INT(C69/60)	=C69-(D69*60) =IF(D69<6,"Short",IF(D69<12,"Medium","Long"))
39452	VCR	310	=INT(C70/60)	=C70-(D70*60) =IF(D70<6,"Short",IF(D70<12,"Medium","Long"))
39452	RSP	368	=INT(C71/60)	=C71-(D71*60) =IF(D71<6,"Short",IF(D71<12,"Medium","Long"))
39452	MAR	837	=INT(C72/60)	=C72-(D72*60) =IF(D72<6,"Short",IF(D72<12,"Medium","Long"))
39452	SMO	854	=INT(C73/60)	=C73-(D73*60) =IF(D73<6,"Short",IF(D73<12,"Medium","Long"))

Page 13	Mark Scheme		Syllabus	Paper
	IGCSE – October/November 2008		0418	03

	Candidate name	Centre number	Candidate number			
39452	GBA	230	=INT(C74/60)	=C74-(D74*60)	=IF(D74<6,"Short",IF(D74<12,"Medium","Long"))	
39452	VCR	422	=INT(C75/60)	=C75-(D75*60)	=IF(D75<6,"Short",IF(D75<12,"Medium","Long"))	
39452	RSP	296	=INT(C76/60)	=C76-(D76*60)	=IF(D76<6,"Short",IF(D76<12,"Medium","Long"))	
39452	MAR	219	=INT(C77/60)	=C77-(D77*60)	=IF(D77<6,"Short",IF(D77<12,"Medium","Long"))	
39452	SMO	368	=INT(C78/60)	=C78-(D78*60)	=IF(D78<6,"Short",IF(D78<12,"Medium","Long"))	
39452	MAR	385	=INT(C79/60)	=C79-(D79*60)	=IF(D79<6,"Short",IF(D79<12,"Medium","Long"))	
39452	LEX	269	=INT(C80/60)	=C80-(D80*60)	=IF(D80<6,"Short",IF(D80<12,"Medium","Long"))	
39452	LEX	366	=INT(C81/60)	=C81-(D81*60)	=IF(D81<6,"Short",IF(D81<12,"Medium","Long"))	
39452	MAR	354	=INT(C82/60)	=C82-(D82*60)	=IF(D82<6,"Short",IF(D82<12,"Medium","Long"))	
39452	GBA	448	=INT(C83/60)	=C83-(D83*60)	=IF(D83<6,"Short",IF(D83<12,"Medium","Long"))	
39452	RSP	833	=INT(C84/60)	=C84-(D84*60)	=IF(D84<6,"Short",IF(D84<12,"Medium","Long"))	

Minutes Cn/60
Integer function
1 mark
1 mark

Seconds Formula works
2 marks

Length
Nested IF
Correct formulae
1 mark
2 marks

Replication All 5 formulae
Orientation Landscape & fit to 1 page width
1 mark
1 mark

Page 14	Mark Scheme	Syllabus	Paper
	IGCSE – October/November 2008	0418	03

Candidate name Centre number Candidate number

Orientation Portrait 1 mark

Name	SCode	Total minutes
G Barney	GBA	92
G Brown	GBR	83
L Exley	LEX	116
M Arnott	MAR	115
R Springett	RSP	33
S Morris	SMO	76
V Cresswell	VCR	48

Row 1 only Centre & bold 1 mark

Row 10 only Centre & bold 1 mark

Date	SCode	Duration	Minutes	Seconds	Length
03/01/2008	MAR	321	5	21	Short
03/01/2008	LEX	334	5	34	Short
03/01/2008	VCR	332	5	32	Short
03/01/2008	SMO	586	9	46	Medium
03/01/2008	GBR	1462	24	22	Long
03/01/2008	GBR	400	6	40	Medium
03/01/2008	VCR	430	7	10	Medium
03/01/2008	SMO	359	5	59	Short
03/01/2008	MAR	376	6	16	Medium
03/01/2008	MAR	168	2	48	Short
03/01/2008	GBA	878	14	38	Long
03/01/2008	GBR	289	4	49	Short
03/01/2008	LEX	302	5	2	Short
03/01/2008	GBA	438	7	18	Medium
03/01/2008	RSP	352	5	52	Short
03/01/2008	GBA	798	13	18	Long
03/01/2008	LEX	769	12	49	Long
03/01/2008	GBA	937	15	37	Long
03/01/2008	LEX	313	5	13	Short
03/01/2008	MAR	390	6	30	Medium
03/01/2008	GBA	326	5	26	Short
03/01/2008	GBR	880	14	40	Long
03/01/2008	LEX	820	13	40	Long
03/01/2008	VCR	333	5	33	Short
03/01/2008	MAR	352	5	52	Short
03/01/2008	LEX	806	13	26	Long
04/01/2008	MAR	388	6	28	Medium
04/01/2008	SMO	488	8	8	Medium
04/01/2008	GBA	302	5	2	Short
04/01/2008	LEX	351	5	51	Short
04/01/2008	LEX	527	8	47	Medium
04/01/2008	MAR	249	4	9	Short
04/01/2008	SMO	942	15	42	Long
04/01/2008	MAR	776	12	56	Long
04/01/2008	MAR	324	5	24	Short
04/01/2008	SMO	354	5	54	Short
04/01/2008	LEX	824	13	44	Long
04/01/2008	LEX	426	7	6	Medium
04/01/2008	LEX	739	12	19	Long
04/01/2008	GBA	300	5	0	Short
04/01/2008	GBR	263	4	23	Short

Page 15	Mark Scheme		Syllabus	Paper
	IGCSE – October/November 2008		0418	03

	Candidate name		Centre number		Candidate number	
04/01/2008	MAR	168	2	48		Short
04/01/2008	VCR	807	13	27		Long
04/01/2008	MAR	821	13	41		Long
04/01/2008	MAR	796	13	16		Long
04/01/2008	VCR	361	6	1		Medium
04/01/2008	GBR	351	5	51		Short
04/01/2008	SMO	282	4	42		Short
04/01/2008	RSP	342	5	42		Short
04/01/2008	GBR	711	11	51		Medium
04/01/2008	SMO	398	6	38		Medium
04/01/2008	GBA	276	4	36		Short
04/01/2008	MAR	297	4	57		Short
04/01/2008	MAR	359	5	59		Short
04/01/2008	GBA	558	9	18		Medium
04/01/2008	GBA	304	5	4		Short
04/01/2008	SMO	264	4	24		Short
05/01/2008	GBR	936	15	36		Long
05/01/2008	LEX	512	8	32		Medium
05/01/2008	VCR	310	5	10		Short
05/01/2008	RSP	368	6	8		Medium
05/01/2008	MAR	837	13	57		Long
05/01/2008	SMO	854	14	14		Long
05/01/2008	GBA	230	3	50		Short
05/01/2008	VCR	422	7	2		Medium
05/01/2008	RSP	296	4	56		Short
05/01/2008	MAR	219	3	39		Short
05/01/2008	SMO	368	6	8		Medium
05/01/2008	MAR	385	6	25		Medium
05/01/2008	LEX	269	4	29		Short
05/01/2008	LEX	366	6	6		Medium
05/01/2008	MAR	354	5	54		Short
05/01/2008	GBA	448	7	28		Medium
05/01/2008	RSP	833	13	53		Long

Page 16	Mark Scheme	Syllabus	Paper
	IGCSE – October/November 2008	0418	03

Candidate name Centre number Candidate number

Step 18

Date	SCode	Duration	Minutes	Seconds	Length
03/01/2008	GBR	1462	24	22	Long
03/01/2008	GBA	878	14	38	Long
03/01/2008	GBA	798	13	18	Long
03/01/2008	LEX	769	12	49	Long
03/01/2008	GBA	937	15	37	Long
03/01/2008	GBR	880	14	40	Long
03/01/2008	LEX	820	13	40	Long
03/01/2008	LEX	806	13	26	Long
04/01/2008	SMO	942	15	42	Long
04/01/2008	MAR	776	12	56	Long
04/01/2008	LEX	824	13	44	Long
04/01/2008	LEX	739	12	19	Long
04/01/2008	VCR	807	13	27	Long
04/01/2008	MAR	821	13	41	Long
04/01/2008	MAR	796	13	16	Long
05/01/2008	GBR	936	15	36	Long
05/01/2008	MAR	837	13	57	Long
05/01/2008	SMO	854	14	14	Long
05/01/2008	RSP	833	13	53	Long

Search Length = Long 2 marks

Candidate name Centre number Candidate number

Date	SCode	Duration	Minutes	Seconds	Length
04/01/2008	VCR	807	13	27	Long
05/01/2008	RSP	833	13	53	Long

Search Length = Long and SCode = VCR OR RSP 2 marks